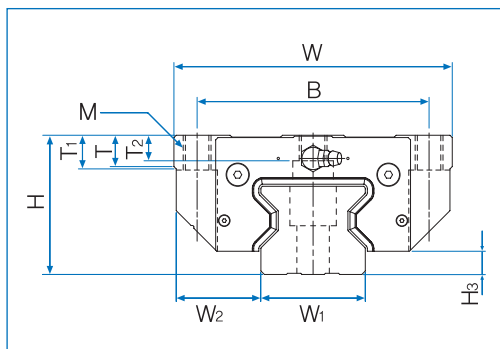
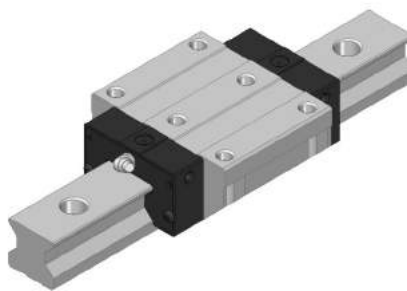
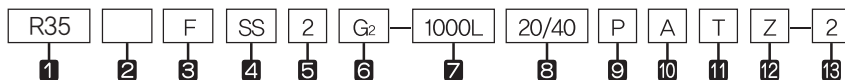


R-F Series, R-FL Series



| Model No. | External dimensions | | | Dimensions of block | | | | | | | | | | | | | Grease nipple | H ₃ |
|-----------|---------------------|---------|----------|---------------------|----|----------------|-----|------|----------------|------|----------------|----------------|----|----|----------|----|---------------|----------------|
| | Height H | Width W | Length L | B | C | C ₂ | M | S | L ₁ | T | T ₁ | T ₂ | N | E | | | | |
| R 35F | 48 | 100 | 125,1 | 82 | 62 | 52 | M10 | 8,5 | 82,5 | 12 | 13 | 8 | 8 | 12 | B-M6F | 7 | | |
| R 35FL | 48 | 100 | 152,1 | 82 | 62 | 52 | M10 | 8,5 | 109,5 | 12 | 13 | 8 | 8 | 12 | B-M6F | 7 | | |
| R 45F | 60 | 120 | 154,4 | 100 | 80 | 60 | M12 | 10,5 | 106,6 | 13,5 | 15 | 11 | 10 | 16 | B-PT 1/8 | 10 | | |
| R 45FL | 60 | 120 | 189,4 | 100 | 80 | 60 | M12 | 10,5 | 141,6 | 13,5 | 15 | 11 | 10 | 16 | B-PT 1/8 | 10 | | |
| R 55F | 70 | 140 | 181,6 | 116 | 95 | 70 | M14 | 12,5 | 127,8 | 17,5 | 18 | 13,5 | 11 | 16 | B-PT 1/8 | 10 | | |
| R 55FL | 70 | 140 | 229,6 | 116 | 95 | 70 | M14 | 12,5 | 175,8 | 17,5 | 18 | 13,5 | 11 | 16 | B-PT 1/8 | 10 | | |

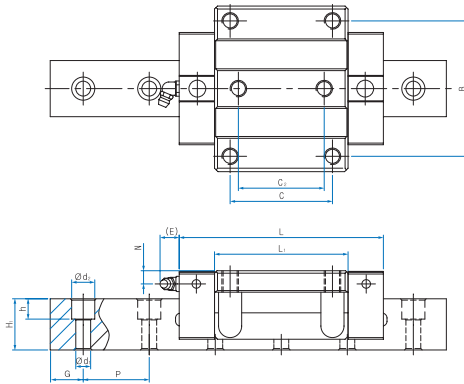
Composition of Model No.



- 1 Model No. of Linear Motion Guide
- 2 Type of block : **No symbol**–Roller type
- 3 Form of block : **R**–Rectangular standard type / **RL**–Rectangular long type / **F**–Flange standard type / **FL**–Flange long type
- 4 Type of seal : **UU**–End seal / **SS**–End seal + Inside seal / **ZZ**–End seal + Inside seal + metal scraper (*1)
- 5 Number of blocks combined in 1 rail
- 6 Symbol of clearance : **No symbol**–Normal preload / **G₁**–Light preload / **G₂**–Heavy preload / **G_s**–Special preload (*2)
- 7 Length of rail
- 8 Size of G value : standard G value has no symbol.
- 9 Symbol of precision : **No symbol**–Moderate precision / **H**–High precision / **P**–Precision / **SP**–Super Precision / **UP**–Ultra Precision (*3)
- 10 **No symbol**–Rail counter bore type (A topside assembly) / **A**– Rail tap hole type (an underside assembly) (*4)
- 11 Connection symbol
- 12 Special symbol
- 13 Number of axis used on the same surface

(*1) See P89 Symbol List of Optional Parts (*2) See P17 Radial Clearance

(*3) See P24 Selection of Precision Class (*4) See P83 The reference for standard tap hole type of a rail



Unit : mm

| Dimensions of Rail | | | | | | Basic load rating | | Static allowance moment kN·m | | | | | Mass | |
|----------------------------------|----------------|-------------------------|------------|------------|-------------------------------------|-------------------|----------------------|------------------------------|------------|----------------|------------|----------------|-------------|--------------|
| Width W ₁ ±0.05 | W ₂ | Heigh H ₁ | Value G | Pitch P | d ₁ x d ₂ x h | C kN | C ₀ kN | M _p | | M _y | | M _r | Block kg | Rail kg/m |
| | | | | | | | | 1 | 2(contact) | 1 | 2(contact) | | | |
| 34 | 33 | 31 | 20 | 40 | 9x14x12 | 50,7 | 121,5 | 1,772 | 8,919 | 1,772 | 8,919 | 2,606 | 1,703 | 6,27 |
| 34 | 33 | 31 | 20 | 40 | 9x14x12 | 63,5 | 162,0 | 3,136 | 14,985 | 3,136 | 14,985 | 3,475 | 2,263 | 6,27 |
| 45 | 37,5 | 38 | 22,5 | 52,5 | 14x20x17 | 82,3 | 210,0 | 3,957 | 19,380 | 3,957 | 19,380 | 5,652 | 3,19 | 10,193 |
| 45 | 37,5 | 38 | 22,5 | 52,5 | 14x20x17 | 102,9 | 280,0 | 7,009 | 32,771 | 7,009 | 32,771 | 7,536 | 4,266 | 10,193 |
| 53 | 43,5 | 43,5 | 30 | 60 | 16x23x20 | 114,8 | 283,5 | 6,406 | 31,061 | 6,406 | 31,061 | 9,364 | 5,393 | 13,37 |
| 53 | 43,5 | 43,5 | 30 | 60 | 16x23x20 | 147,5 | 391,6 | 12,168 | 56,12 | 12,168 | 56,121 | 12,931 | 7,5 | 13,37 |

1N=0,102kgf

