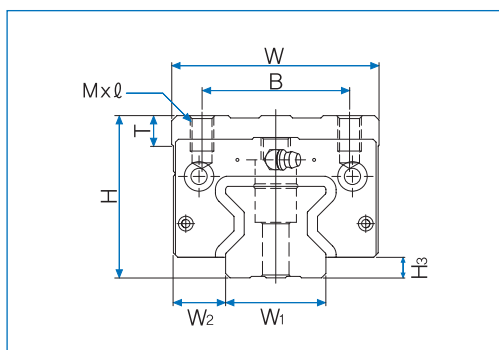
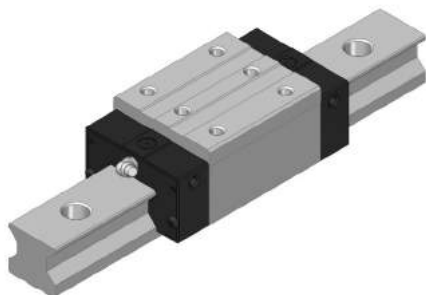
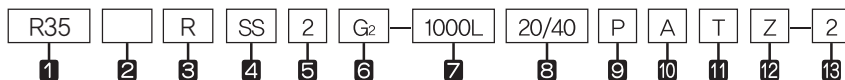


R-R Series, R-RL Series



Model No.	External dimensions			Dimensions of block							Grease nipple	H ₃
	Height H	Width W	Length L	B	C	M x l	L ₁	T	N	E		
R 35R	55	70	125,1	50	50	M8 x 12	82,5	10,3	15	12	B-M6F	7
R 35RL	55	70	152,1	50	72	M8 x 12	109,5	10,3	15	12	B-M6F	7
R 45R	70	86	154,4	60	60	M10 x 20	106,6	24,5	20	16	B-PT 1/8	10
R 45RL	70	86	189,4	60	80	M10 x 20	141,6	24,5	20	16	B-PT 1/8	10
R 55R	80	100	181,6	75	75	M12 x 18	127,8	27,5	22	16	B-PT 1/8	10
R 55RL	80	100	229,6	75	95	M12 x 18	175,8	27,5	22	16	B-PT 1/8	10

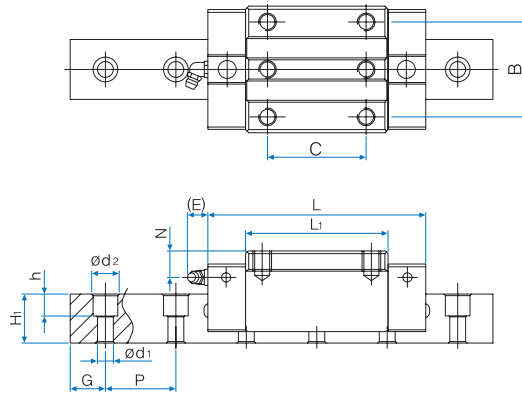
Composition of Model No.



- 1 Model No. of Linear Motion Guide
- 2 Type of block : No symbol–Roller type
- 3 Form of block : R–Rectangular standard type / RL–Rectangular long type / F–Flange standard type / FL–Flange long type
- 4 Type of seal : UU–End seal / SS–End seal + Inside seal / ZZ–End seal + Inside seal + metal scraper (*1)
- 5 Number of blocks combined in 1 rail
- 6 Symbol of clearance : No symbol–Normal preload / G₁–Light preload / G₂–Heavy preload / G_s–Special preload (*2)
- 7 Length of rail
- 8 Size of G value : standard G value has no symbol.
- 9 Symbol of precision : No symbol–Moderate precision / H–High precision / P–Precision / SP–Super Precision / UP–Ultra Precision (*3)
- 10 No symbol–Rail counter bore type (A topside assembly) / A– Rail tap hole type (an underside assembly) (*4)
- 11 Connection symbol
- 12 Special symbol
- 13 Number of axis used on the same surface

(*1) See P89 Symbol List of Optional Parts (*2) See P17 Radial Clearance

(*3) See P24 Selection of Precision Class (*4) See P83 The reference for standard tap hole type of a rail



Unit : mm

Dimensions of Rail						Basic load rating		Static allowance moment kN·m				Mass		
Width W ₁ ±0.05	W ₂	Heigh H ₁	Value G	Pitch P	d ₁ x d ₂ x h	C kN	C ₀ kN	M _p		M _y		M _r 1	Block kg	Rail kg/m
								1	2(contact)	1	2(contact)			
34	18	31	20	40	9x14x12	50,7	121,5	1,772	8,919	1,772	8,919	2,606	1,179	6,27
34	18	31	20	40	9x14x12	63,5	162,0	3,136	14,985	3,136	14,985	3,475	2,263	6,27
45	20,5	38	22,5	52,5	14x20x17	82,3	210,0	3,957	19,380	3,957	19,380	5,652	3,103	10,193
45	20,5	38	22,5	52,5	14x20x17	102,9	280,0	7,009	32,771	7,009	32,771	7,536	4,08	10,193
53	23,5	43,5	30	60	16x23x20	114,8	283,5	6,406	31,061	6,406	31,061	9,364	4,723	13,37
53	23,5	43,5	30	60	16x23x20	147,5	391,6	12,168	56,121	12,168	56,121	12,931	6,466	13,37

1N=0,102kgf

